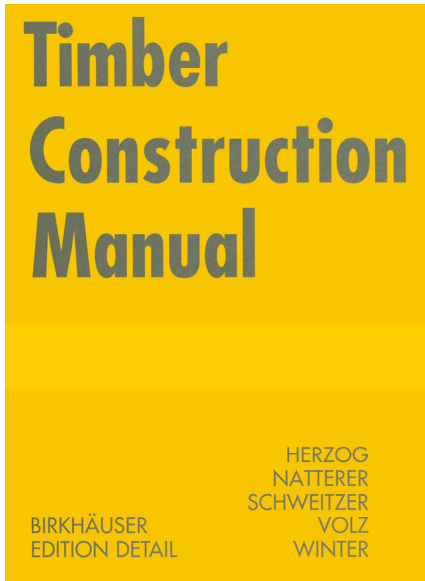


school for mentally disabled children in Garbsen / Hannover 2002, featured in „**Timber Manual**“ / edition Birkhäuser Basel-Boston-Berlin / 2003



Timber Construction Manual

HERZOG
NATTERER
SCHWEITZER
VOLZ
WINTER

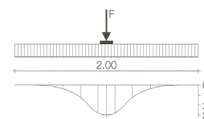
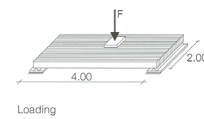
Birkhäuser – Publishers for Architecture
Basel · Boston · Berlin

Edition Detail
Munich

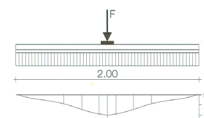
Structures

Plates and slabs

Floor plate using edge-glued elements



Load distribution of point load without floor finishes



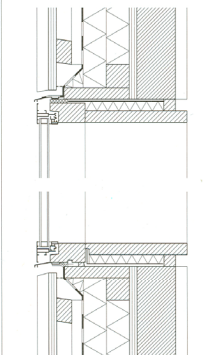
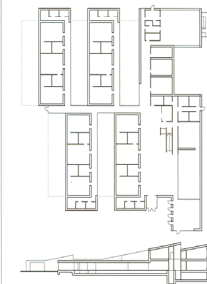
Load distribution of point load with floor finishes (wood-based boards and impact sound insulation)

85 · School for special needs children

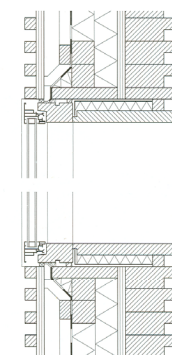
Garbsen, D; 2002

Architects: Despang Architekten, Hannover, D

Structural engineers: Ingenieurgesellschaft Lieberum und Steckstor, Hannover, D



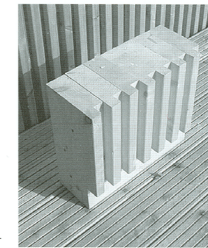
Facade, vertical section



Facade, horizontal section



The four single-storey classroom wings and the upper floor of the administration block are built entirely of prefabricated edge-glued elements, which enabled quick erection on site. As with log construction, the large mass of timber and its heat storage capacity results in a comfortable interior climate. The floors and walls of edge-glued elements are profiled on the exposed faces and backed with oriented strand boards (OSB) to provide stiffness. The building services are installed in the cavities of the double-leaf internal walls.



Variations for edge-glued elements

